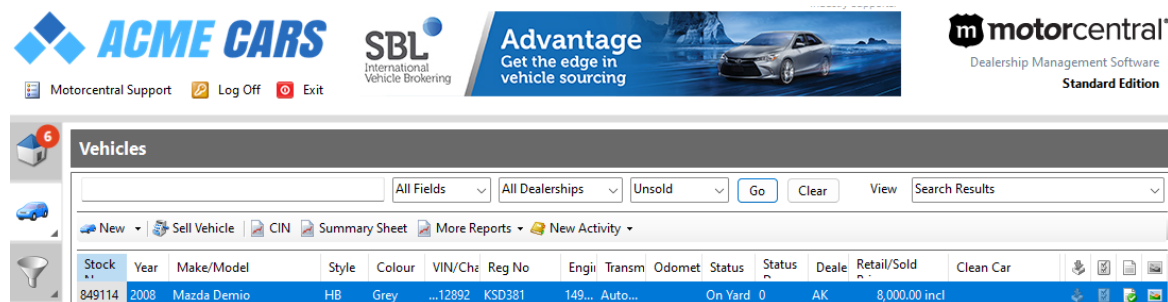


Fuel Economy & Safety Rating labels

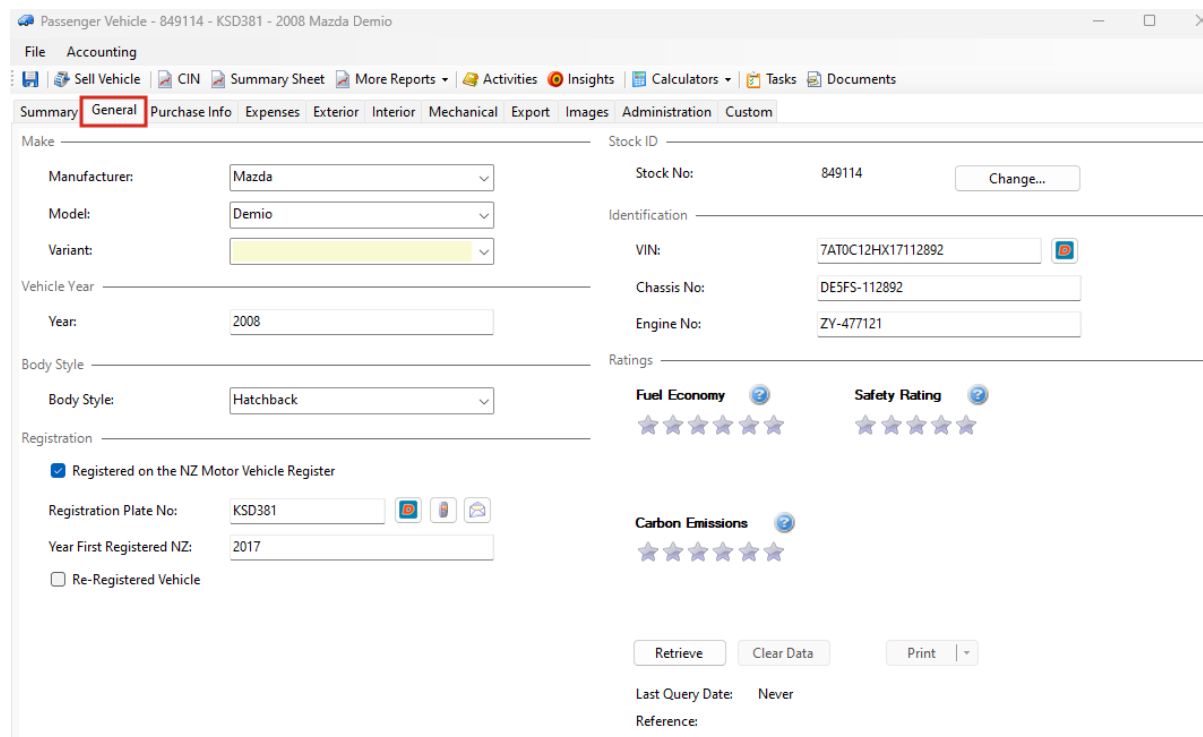
In this document we cover a number of commonly asked questions around accessing Fuel Economy & Safety Rating labels inside Motorcentral. Follow the steps outlined in this document to achieve the outcome outlined.

Retrieving Fuel Economy & Safety Rating information on a vehicle

Step 1: From the Motorcentral vehicle screen select the vehicle you wish to work with and double click to open



Step 2: Navigate to the **General** tab



Step 3: Navigate to the **Ratings** section and click on the **Retrieve** button

Note: A VIN or Registration number is needed to retrieve the data. Data is retrieved from <http://fuelsaver.govt.nz>

Ratings

Fuel Economy



6.5L per 100km
Annual fuel cost of \$2,550

Safety Rating



Based on 2022 UCSR rating for 07-14 models

Carbon Emissions



155 grams/km
2.17 tonnes CO2 per year

Retrieve

Clear Data

Print

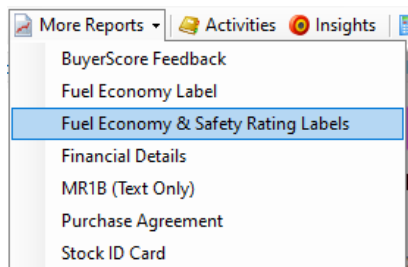
Last Query Date: 12/10/2023 12:44:51 pm

Reference: V:7AT0C12HX17112892

Printing a Fuel Economy & Safety Rating Label

Step 1: A Fuel Economy & Safety Rating Label can be printed from either;

The **More Reports** button:



Or in the vehicle's **General** tab:

General Purchase Info Expenses Exterior Interior Mechanical Export Images Administration Custom

Stock ID

Manufacturer: Mazda
Model: Demio
Year: 2008
Style: Hatchback

Registered on the NZ Motor Vehicle Register

Registration Plate No: KSD381
First Registered NZ: 2017
Previously Registered Vehicle

Stock No: 849114
Change...

Identification

VIN: 7AT0C12HX17112892
Chassis No: DE5FS-112892
Engine No: ZY-477121

Ratings

Fuel Economy
5 stars
6.5L per 100km
Annual fuel cost of \$2,550

Safety Rating
5 stars
Based on 2022 UCSR rating for 07-14 models

Carbon Emissions
5 stars
155 grams/km
2.17 tonnes CO2 per year

Retrieve Clear Data Print

Last Query Date: 16/10/2023 3:51:26 pm
Reference: V:7AT0C12HX17112892

Fuel Economy Label
Fuel Economy & Safety Rating Labels

Step 2: If you select the **Fuel Economy & Safety Rating Labels** option, this will open the document ready to be printed

2008 Mazda Demio

Vehicle Emissions and Energy Economy Label Petrol

VEHICLE MAKE: MAZDA
VEHICLE MODEL: DEMIO

Emissions
NO REBATE OR FEE
\$ 0.00
155 g/km CO₂ (by WLTP)

Energy Economy
\$ 2,550 COST PER YEAR
6.5 litres/100km (by WLTP)

Reference: V:7ATOC12HX17112892D:171023
New Zealand Government

Overall safety 3-star safety rating
The more stars the safer the car

RIGHTCAR

Rating system: Used Car Safety Rating
Year of rating: 2022
Make: MAZDA
Model: DEMIO
Year: 2008
Rego/VIN: DESFS-112892

To find out more visit rightcar.govt.nz

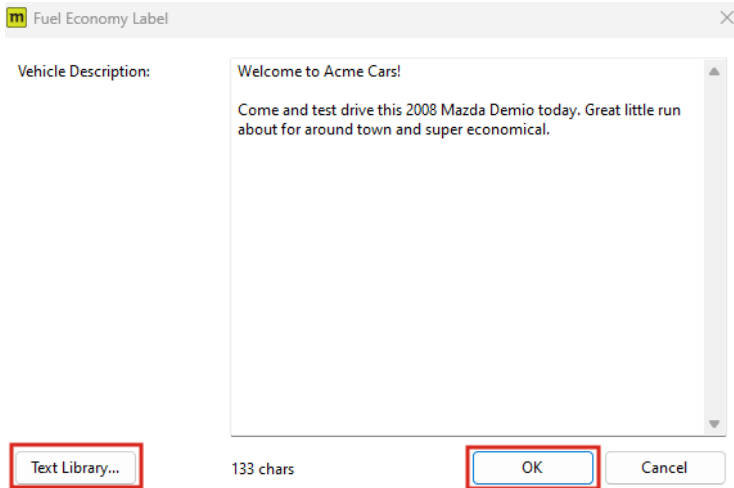
Disclaimer: The safety rating displayed on this label is for comparative purposes. Safety ratings indicate the likely performance of a vehicle in a crash. Actual safety performance depends on various factors such as crash circumstances, vehicle repair history and vehicle maintenance. Safety ratings are reviewed annually. The safety rating displayed is current at the time of printing.

REFERENCE CODE: V:7ATOC12HX17112892D:171023

WAKA KOTAHU
NZ TRANSPORT AGENCY

WHEELS TO ZERO
New Zealand Government

If you choose to print the **Fuel Economy Label** option, the below **Vehicle Description** box will appear. This is pre populated with the vehicle text from the **Export** tab. You can amend any text here, or select pre written text from the library. Click **OK** to continue.



This will open the document ready for printing

2008 Mazda Demio

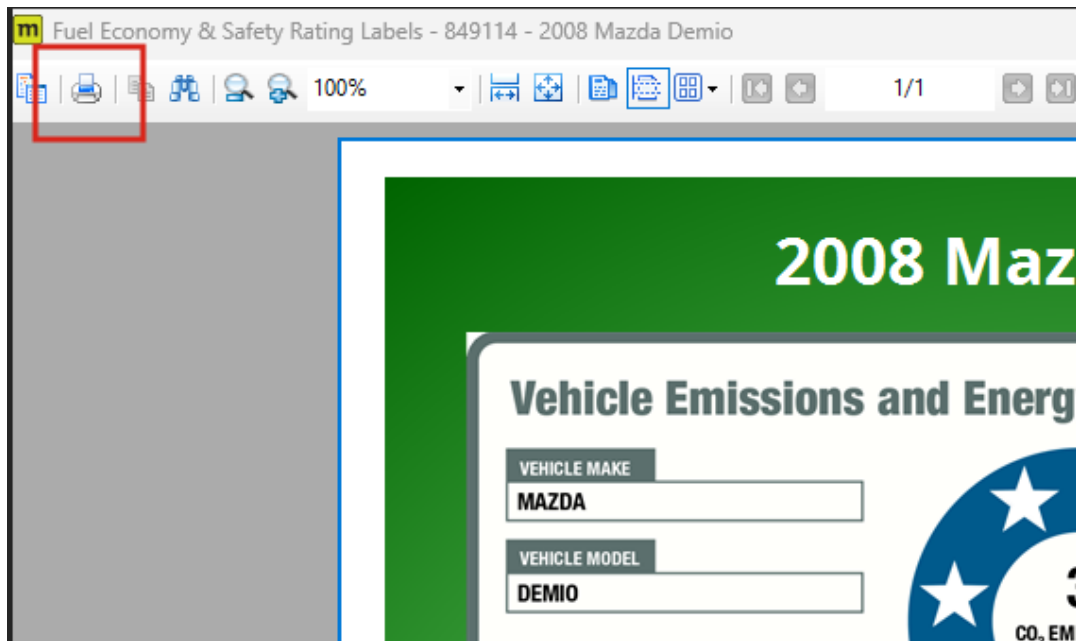
<p>Body 5 Door, Hatchback, Grey</p> <p>Odometer 200,000 km</p> <p>Interior 5 Seats</p> <p>Engine 1490 cc, Petrol</p> <p>Trans Front Wheel, Automatic</p> <hr/> <p>Welcome to Acme Cars!</p> <p>Come and test drive this 2008 Mazda Demio today. Great little run about for around town and</p> <hr/> <ul style="list-style-type: none"> • AA Appraised • Air Bag(s) • Alloys • Bluetooth • Central Locking • Digital Dash • ABS Brakes • Air Conditioning • Auto Lights • Body Kit (Factory) • Central Locking • Electric Mirrors 	<p>\$53.49 weekly* Total Amount Payable \$11,126.52</p> <p style="font-size: 2em; font-weight: bold;">\$8,000</p> <p><small>Note: A Clean Car fee or rebate may apply to this vehicle</small></p> <hr/> <p>Easy Finance No Deposit</p> <div style="background-color: #0056b3; color: white; padding: 5px; text-align: center; font-weight: bold; font-size: 1.2em;">FINANCE</div> <hr/> <p>Vehicle Insurance for Peace of Mind</p>
--	---

Vehicle Emissions and Energy Economy Label Petrol

<p><small>VEHICLE MAKE</small> MAZDA</p> <p><small>VEHICLE MODEL</small> DEMIO</p>		<p>Emissions NO REBATE OR FEE \$ 0.00</p> <p>155 g/km CO₂ <small>Typical Emissions</small></p>
<p>Emissions: The information is guidance on how environmentally friendly the vehicle is based on tailpipe CO₂ emissions. Under the Clean Car Discount scheme, low emitting vehicles may be eligible for a rebate, and high emitting vehicles may incur a fee. Rebates and fees are based on emissions in grams of CO₂ per kilometre. The value provided in this notice is an estimate only and slightly criteria apply. Visit rate.govt.nz/vehicle to find out more.</p> <p>Energy Economy: The information is intended for comparative purposes. Data is based on standardised testing that allows consumers to directly compare the emissions and energy economy of different vehicle makes and models. Your actual cost per year, energy economy and/or ECR may vary for many reasons including driving styles, traffic and weather conditions, vehicle loading, vehicle maintenance and tyre pressure.</p> <p> For more information scan the QR code or visit: www.nzta.govt.nz/vehiclecar</p> <p><small>Reference: V:7AT0C12HX17112892D:171023</small></p> <p><small>New Zealand Government</small></p>		<p>Energy Economy \$ 2,550 COST PER YEAR</p> <p>6.5 litres/100km <small>Cost per year is an estimate based on petrol price of \$2.00 per litre and an average distance of 10000 km.</small></p>

* Finance calculation based on a 48 month term, no deposit and with an example annual fixed interest rate of 12.95%. Actual interest rate may be higher or lower. Includes an establishment fee of \$350.00 and a monthly maintenance fee of \$8.00. Full term total amount payable of \$11,126.52. Estimate only, not an offer of finance. Terms, conditions and lending criteria apply.

Step 3: To print the document click on the **Print icon**




To find out how to update information on your fuel economy label document, such as weekly Finance Payments or Supplier logos please contact our support team on 0800 623 687 or support@motorcentral.co.nz

Fuel Economy Label options available in Motorcentral

Below are examples of the 2 **Fuel Economy Labels** available in Motorcentral

Fuel Saver V1


Vehicle Emissions and Energy Economy Label Petrol

VEHICLE MAKE MAZDA		Emissions NO REBATE OR FEE \$ 0.00	155 <small>g/km CO₂</small> <small>Talpaque Emissions</small>
VEHICLE MODEL DEMO		Energy Economy \$ 2,550 <small>COST PER YEAR</small> 6.5 <small>litres/100km</small> <small>Cost per year is an estimate based on petrol price of \$2.00 per litre and an average distance of 10000 km.</small>	


Reference: V:7AT0C129K1711289D:171023
New Zealand Government

Fuel Saver V2

2008 Mazda Demio

<table style="width: 100%; border-collapse: collapse;"> <tr><td style="border-bottom: 1px solid black;">Body</td><td>5 Door, Hatchback, Grey</td></tr> <tr><td style="border-bottom: 1px solid black;">Odometer</td><td>200,000 km</td></tr> <tr><td style="border-bottom: 1px solid black;">Interior</td><td>5 Seats</td></tr> <tr><td style="border-bottom: 1px solid black;">Engine</td><td>1490 cc, Petrol</td></tr> <tr><td style="border-bottom: 1px solid black;">Trans</td><td>Front Wheel, Automatic</td></tr> </table> <p style="margin-top: 10px;">Welcome to Acme Cars!</p> <p>Come and test drive this 2008 Mazda Demio today. Great little run about for around town and</p> <ul style="list-style-type: none"> • AA Appraised • Air Bag(s) • Alloys • Bluetooth • Central Locking • Digital Dash • ABS Brakes • Air Conditioning • Auto Lights • Body Kit (Factory) • Central Locking • Electric Mirrors 	Body	5 Door, Hatchback, Grey	Odometer	200,000 km	Interior	5 Seats	Engine	1490 cc, Petrol	Trans	Front Wheel, Automatic	<div style="text-align: right; background-color: #333; color: white; padding: 5px; font-size: 0.8em;"> \$53.49 weekly* Total Amount Payable \$11,126.52 </div> <div style="text-align: center; margin-top: 10px;"> <h2 style="color: #0070c0; margin: 0;">\$8,000</h2> <p style="font-size: 0.8em; color: #0070c0;">Note: A Clean Car fee or rebate may apply to this vehicle</p> </div> <div style="text-align: center; margin-top: 10px;"> <p style="font-size: 0.8em;">Easy Finance No Deposit</p> <div style="background-color: #0070c0; color: white; padding: 5px; text-align: center; font-weight: bold; font-size: 1.1em; margin: 5px auto; width: 60px;">FINANCE</div> </div> <div style="text-align: center; margin-top: 10px;"> <p style="font-size: 0.8em;">Vehicle Insurance for Peace of Mind</p>  </div>
Body	5 Door, Hatchback, Grey										
Odometer	200,000 km										
Interior	5 Seats										
Engine	1490 cc, Petrol										
Trans	Front Wheel, Automatic										

Vehicle Emissions and Energy Economy Label Petrol

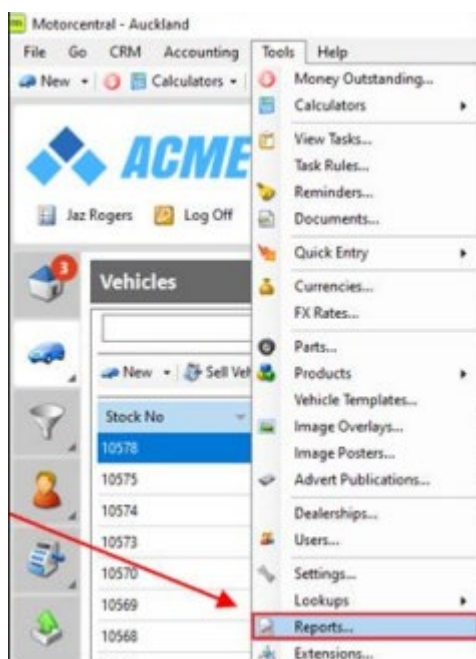
VEHICLE MAKE MAZDA		Emissions NO REBATE OR FEE \$ 0.00	155 <small>g/km CO₂</small> <small>Talpaque Emissions</small>
VEHICLE MODEL DEMO		Energy Economy \$ 2,550 <small>COST PER YEAR</small> 6.5 <small>litres/100km</small> <small>Cost per year is an estimate based on petrol price of \$2.00 per litre and an average distance of 10000 km.</small>	

Reference: V:7AT0C129K1711289D:171023
New Zealand Government

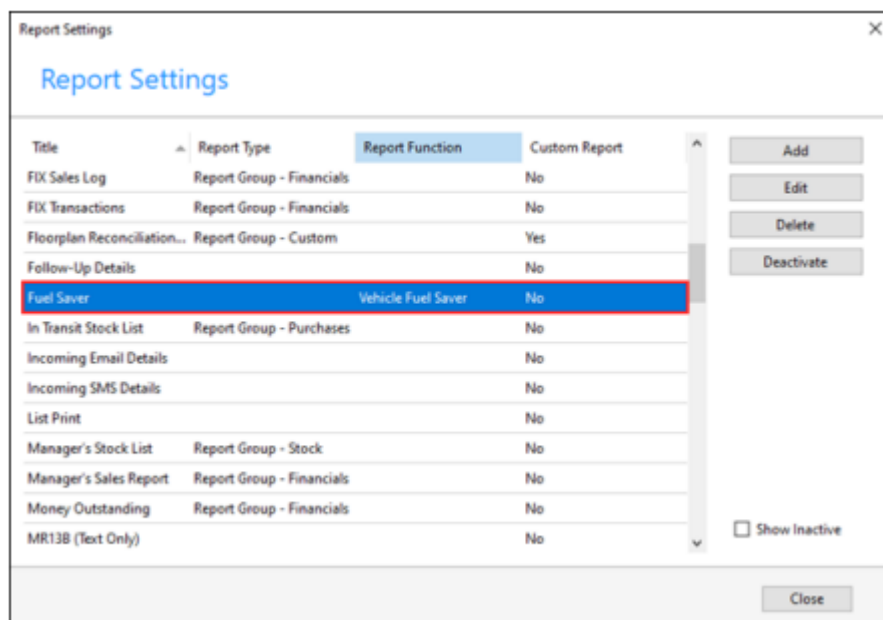
* Finance calculation based on a 48 month term, no deposit and with an example annual fixed interest rate of 12.95%. Actual interest rate may be higher or lower. Includes an establishment fee of \$350.00 and a monthly maintenance fee of \$8.00. Full term total amount payable of \$11,126.52. Estimate only, not an offer of finance. Terms, conditions and lending criteria apply.

Changing Fuel Economy Label documents in Motorcentral:

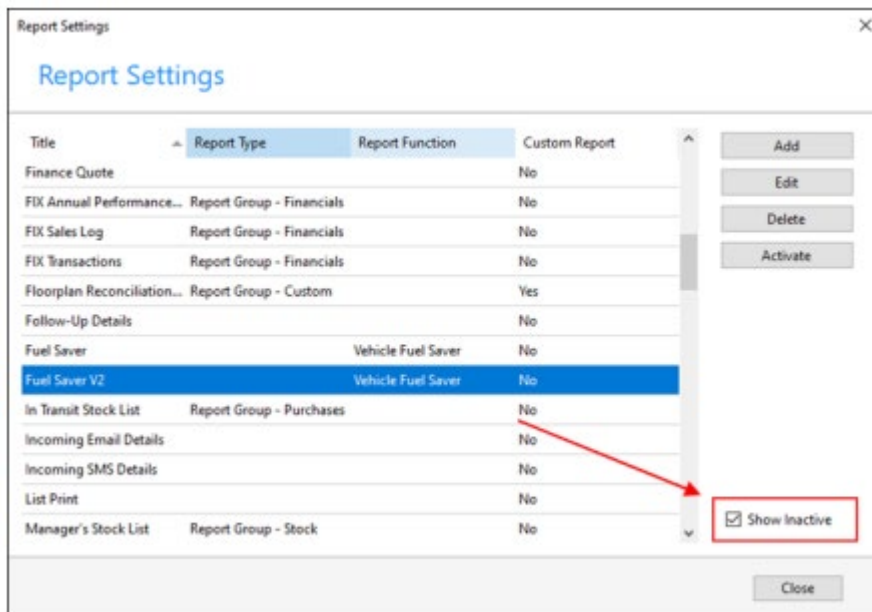
Step 1: To change the version of the Fuel Saver document being used, navigate to the Main Motorcentral screen Tools > Reports



Step 2: Once you open Reports the below screen will appear. This displays the Report Settings and will show the current document in use as per the below example



Step 3: To change Fuel Saver Documents, tick the Show Inactive box which will then show both Fuel Saver documents:



Step 4: Click on the inactive form and select activate from the menu on the right hand side of the screen, this will automatically deactivate the document no longer required

